



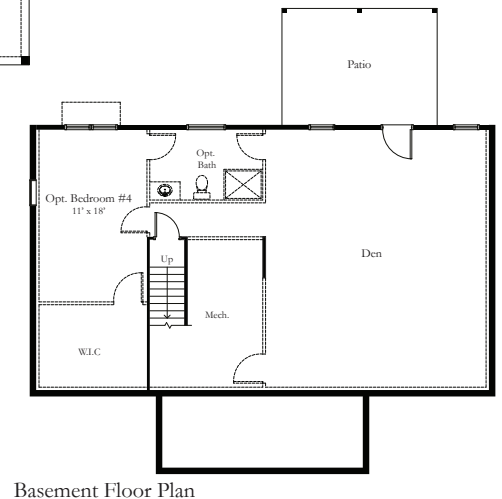
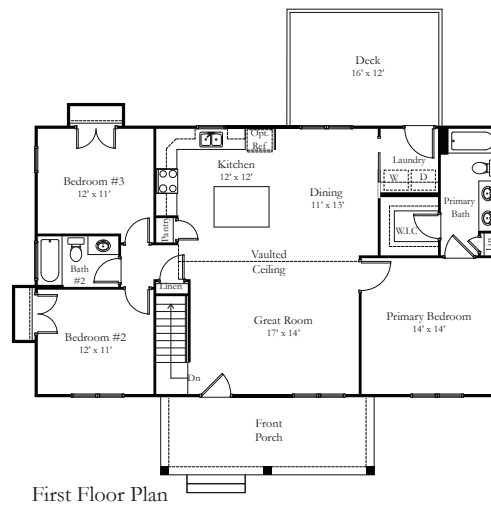
QUICK FACTS

3  2 

- Open concept floor plan
- Primary bedroom with en suite and walk-in closet
- Luxury vinyl plank floors
- Granite countertops
- Stamped concrete porch and sidewalk
- Bullnose drywall corners

BUILDING INFORMATION

Total Living	1372 SF
Basement	1344 SF
Front Porch	176 SF
Deck	192 SF
Patio	192 SF



STANDARD FEATURES

STRUCTURAL

- Superior walls on front and sides with brick veneer; rear wall is framed with siding veneer; basement is unfinished
- 2x4 stud wall framing, 2x6 back wall framed, 16" on-center
- OSB sheathing with house wrap
- Engineered truss roof system

EXTERIOR

- 30 year architectural shingles
- Front door is wood grain fiberglass two panel craftsman with glass accent
- Rear door is steel 1/2 lite with two panels below; basement door is full lite steel
- Stamped, colored, and sealed concrete front porch and sidewalk; broom finished patio on basement level 16'x12'
- Two exterior frost-free hose bibs
- Two exterior GFI outlets
- Vinyl siding and soffit, 1x6 PVC trim around front windows
- Straight square fiberglass columns
- Seamless white aluminum 5" gutters with 3x4 downspouts
- Landscaping package on front and driveway side of house
- Septic system (allowance is for a 3 bedroom conventional gravity fed system)
- Class IIIC well, drilled (allowance given)
- Pressure treated rear deck 16x12

INTERIOR

- Ceiling height 9'; basement ceiling height is 8'
- Oil rubbed bronze or satin nickel lighting package
- Ceiling fans with light kits in great room and all bedrooms
- Recessed lighting and pendants as per plan
- Hollow core interior doors
- 1x4 door and window trim; 1x6 baseboard trim
- Wood rods and shelves in closets; wood shelf in laundry room
- Neutral color on walls (flat latex), white on ceilings (flat latex) and trim (semi-gloss), two color maximum
- Scuttle attic access in hallway and primary closet
- Luxury vinyl plank floors in kitchen, dining area, great room, and hallway; carpet in all bedrooms and closets; ceramic tile flooring in laundry and baths; stairs to basement are pine with stained treads and painted risers

KITCHEN

- Cabinets have wood dovetail drawers with soft close undermount drawer guides
- Level 1 granite countertops
- Stainless steel undermount sink with stainless steel single hole faucet with sprayer
- Stainless steel electric range, over the range vented microwave, and dishwasher
- Appliance connections for refrigerator with ice maker, washer, and electric dryer

BATHS

- Fiberglass tub/shower units in all baths with curved shower rods
- Comfort height elongated toilet in primary bath, and standard height elongated toilet in hall bath
- Vanity cabinets have wood dovetail drawers with soft close, undermount drawer guides; single bowl in hall bath and double bowls in primary bath
- Sheet mirrors over vanities
- Level 1 granite counter tops with oval undermount porcelain bowls
- Exhaust fans
- Delta faucets, chrome finish
- Oil rubbed bronze or satin nickel bath accessories
- Future basement bath is roughed in only

ENERGY EFFICIENCY

- Insulated, double hung, white vinyl windows with Low-E glass
- HVAC - 14 SEER electric heat pump with air handler
- R-49 insulation in ceilings, R-15 in exterior walls, air sealing package
- 200 AMP electric service
- 48 gallon electric water heater (located in basement)

PEACE OF MIND

- Warranty per Virginia Statute 55.1-357
- Builder's risk insurance throughout construction
- Electric smoke alarms with battery backup (as per building code)
- Termite treatment one year warranty
- Professional cleaning prior to home closing

Note: These included standard quality features are subject to change at any time. Because of personal choice selections, the Purchaser's contract takes precedence over this features sheet.