

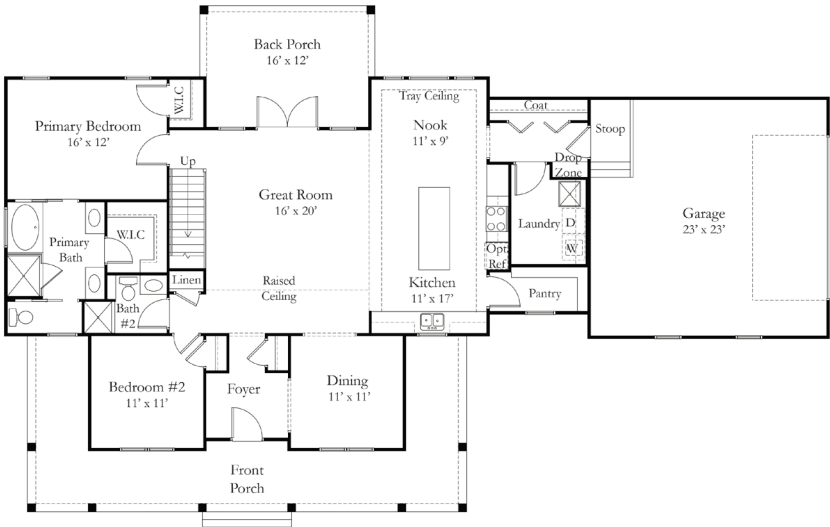


QUICK FACTS

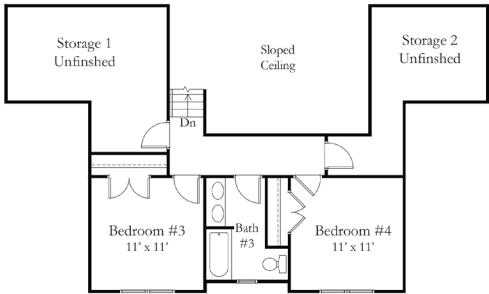
4  3 

BUILDING INFORMATION

First Floor	1732 SF
Second Floor	458 SF
Total Living	2190 SF
Front Porch	405 SF
Back Porch	201 SF
Storage 1	199 SF
Storage 2	161 SF
Garage	576 SF



First Floor Plan



Second Floor Plan

STANDARD FEATURES

STRUCTURAL

- Brick and block foundation an average of 40" tall
- 2x4 stud wall framing, 16" on-center
- OSB sheathing with house wrap
- Engineered truss roof system

EXTERIOR

- 30 year architectural shingles
- Front door is wood grain fiberglass two panel craftsman with glass accent
- Rear doors are steel full lite double doors
- Stamped, colored, and sealed concrete front porch, sidewalk, rear porch, garage apron, and pad
- Two exterior frost-free hose bibs
- Two exterior GFI outlets
- Vinyl siding and soffit, 1x6 PVC trim around front windows
- Columns are straight 10" fiberglass on brick piers
- Seamless white aluminum 5" gutters with 3x4 downspouts
- Landscaping package on front and driveway side of house
- Septic system (allowance is for a 4 bedroom conventional gravity fed system)
- Class IIIC well, drilled (allowance given)
- Gravel driveway up to 200'
- Garage wired to code with two outlets, insulated, has drywall and is spray painted white
- Overhead garage door is insulated, with automatic opener

INTERIOR

- Ceilings 9' and tray; upstairs ceilings are 8' and sloped, as per plan
- Oil rubbed bronze or satin nickel lighting package
- Ceiling fans with light kits in great room and all bedrooms
- Recessed lighting and pendants as per plan
- Hollow core interior doors
- 1x4 door and window trim; 1x6 baseboard trim
- Wood rods and shelves in closets; wood shelf in laundry room and pantry
- Neutral color on walls (flat latex), white on ceilings (flat latex) and trim (semi-gloss); two color maximum
- Storage rooms upstairs are unfinished
- Pull down attic stairs in garage
- Luxury vinyl plank floors in the great room, dining area, nook, mudroom, kitchen, and hallways; carpet in all bedrooms and closets, ceramic tile flooring in baths and laundry room
- Built in drop zone with bench and coat hooks
- Stairs are oak with stained treads and painted risers

KITCHEN

- Cabinets have wood dovetail drawers with soft close undermount drawer guides
- Level 1 granite countertops
- Stainless steel undermount sink with stainless steel single hole faucet with sprayer
- Stainless steel electric range, over the range vented microwave, and dishwasher
- Appliance connections for refrigerator with ice maker, washer, and electric dryer

BATHS

- Fiberglass shower with straight rod in hall bath, fiberglass tub/shower with curved rod in upstairs bath
- Fiberglass soaking tub and tiled shower with shower door in primary bath
- Comfort height elongated toilet in primary bath, standard height elongated in hall and upstairs baths
- Vanity cabinets have wood dovetail drawers with soft close, undermount drawer guides; single bowl in hall bath and double bowls in primary and hall bath
- Sheet mirrors over vanities
- Level 1 granite counter tops with oval undermount porcelain bowls
- Exhaust fans
- Delta faucets, chrome finish
- Oil rubbed bronze or satin nickel bath accessories

ENERGY EFFICIENCY

- Insulated, double hung, white vinyl windows with Low-E glass
- HVAC - 14 SEER electric heat pump with air handler
- Conditioned crawl space
- R-49 insulation in ceilings, R-15 in exterior walls, air sealing package
- 200 AMP electric service
- 48 gallon water heater (located in crawl space)

PEACE OF MIND

- Warranty per Virginia Statute 55.1-357
- Builder's risk insurance throughout construction
- Electric smoke alarms with battery backup (as per building code)
- Termite treatment one year warranty
- Professional cleaning prior to home closing

Note: These included standard quality features are subject to change at any time. Because of personal choice selections, the Purchaser's contract takes precedence over this features sheet.